

## QCPF-ML2G-M38

### SMP Connector, DC~40GHz

Features:  
\* Low VSWR

Applications:  
\* Wireless  
\* Radar  
\* Instruments  
\* Electronics

#### Electrical

Frequency:	DC~40GHz
VSWR:	1.3 max.
Impedance of Dielectric:	5000M $\Omega$ min.
Impedance of Inner Conductor:	6m $\Omega$ max.
Impedance of Outer Conductor:	2m $\Omega$ max.
Voltage Withstand:	335V DC
Impedance:	50 $\Omega$

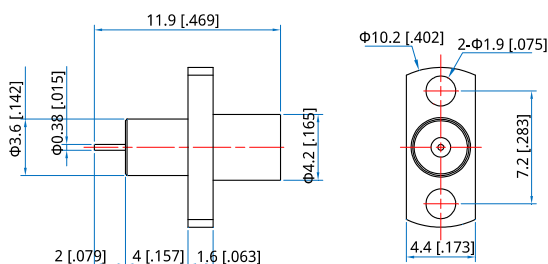
#### Mechanical

RF Connector:	SMP male
Detent mode:	Full Detent
Outer Conductor:	Passivated SUS303 stainless steel
Dielectric:	PEI & PTFE or PEI
Inner Conductor:	Gold plated kovar material or gold plated beryllium copper

#### Environmental

Temperature:	-55~+165°C
--------------	------------

#### Outline Drawings



Outline A

Unit: mm [in]

Tolerance:  $\pm 0.2\text{mm}$  [ $\pm 0.008\text{in}$ ]

#### How To Order

**QCPF-ML2G-M38-01** - Outline A

Customization is available upon request.